

# New Mexico Callers in 2018

to the National Suicide Prevention Lifeline



In 2018, the Lifeline received  
**2.5 million**  
crisis calls from across the United States

**17,870**  
calls were from New Mexico

Of the 17,870 callers, **4,903 individuals** pressed "1" to be transferred to the Veterans Crisis Line and **207** pressed "2" for Lifeline's Spanish Language Line.

Ideally, the remaining **12,760 calls** in 2018 would have been answered by Lifeline call centers in New Mexico.

Of those, **10,916 calls (86%)** were able to be answered in-state.

Which meant **1,844 callers** in crisis were **unable to be answered** by a New Mexico call center.

## Established in 2005

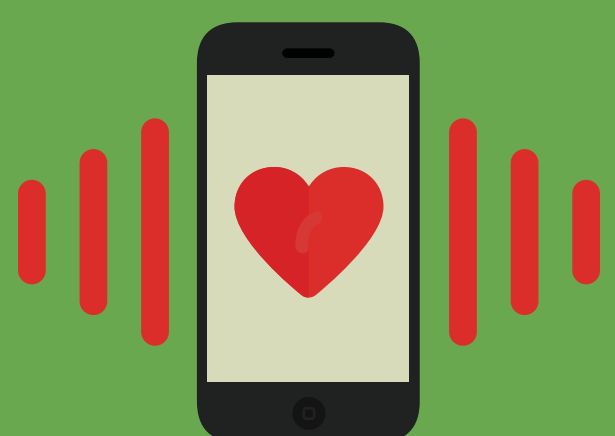
the National Suicide Prevention Lifeline is the nation's most recognized suicide and mental health crisis line.

The Lifeline is not one large national call center. Instead, it is a network of 170 independently operated, independently funded local, regional, and state-level call centers. In 2018 there were 3 Lifeline-affiliated centers in New Mexico. They have the expertise and linkages to local resources that callers in crisis deserve.

To participate in the Lifeline network, centers operate to the highest standards of suicide care. They do an incredible job of de-escalating crisis situations, decreasing emotional distress, and reducing suicidality.

In the event local centers are unable to answer, the Lifeline re-routes calls to backup centers in our network (both in and out-of-state).

Why is this?  
How can I help?



**+89%**

The number of Lifeline calls that needed answering by New Mexico call centers increased 89% from 2016 to 2018

The Lifeline is administered through Vibrant Emotional Health and funded by the U.S. Substance Abuse and Mental Health Services Administration



# In 2019, there are **2** Lifeline network call centers in **2** New Mexico



- 📍 New Mexico Crisis and Access Line (statewide)
- 📍 Agora Crisis Center (Albuquerque)

## Why were only 86% of 2018's Lifeline calls in New Mexico answered in-state?

Lifeline call centers in New Mexico set the hours and coverage areas for when and where they will take Lifeline calls. **They do this based on funding and staffing levels.**

Most Lifeline-affiliated call centers in the U.S. (including in NM) answer other helplines in addition to the Lifeline. **Despite their very best efforts, call volume can, at times, strain center capacity and callers may hang up while they wait for the next available counselor.**

When local call centers are unable to answer, the Lifeline pulls the call back and sends it out of state and into our national backup center sub-network.

When calls are re-routed to centers out-of-state, New Mexico callers in crisis wait longer, they receive fewer linkages to effective local care, and are more likely to abandon their calls.



## Proven effective; needing support

Research shows the Lifeline is an effective, life-saving safety net for those in crisis (Gould et al., 2007, 2013, 2015, 2017; Ramchand et al., 2016). According to a 2018 survey of Lifeline centers, **almost 98% of the crisis calls are de-escalated such that costly, highly-restrictive responses from law enforcement and emergency medical services are not necessary.**

The Lifeline is federally funded to manage the call routing, best practice standards, public messaging, and technical assistance for its network. However, **the funds that sustain our network's centers come from state, county and local sources.** Many centers struggle to find enough funding to operate and grow.

These call centers are key components of New Mexico's behavioral health systems because they represent an entry point into other levels of coordinated care. They provide critical services for New Mexico residents at serious risk, especially those with nowhere else to turn.

**Current New Mexico Lifeline centers need expanded support.**

**You can advocate for them.**



**Please join the cause!**

**Reach out to your local centers and decision-makers in New Mexico.**

Learn more about the Lifeline as well as how to contact your centers in New Mexico by visiting:  
<http://suicidepreventionlifeline.org/our-network/>